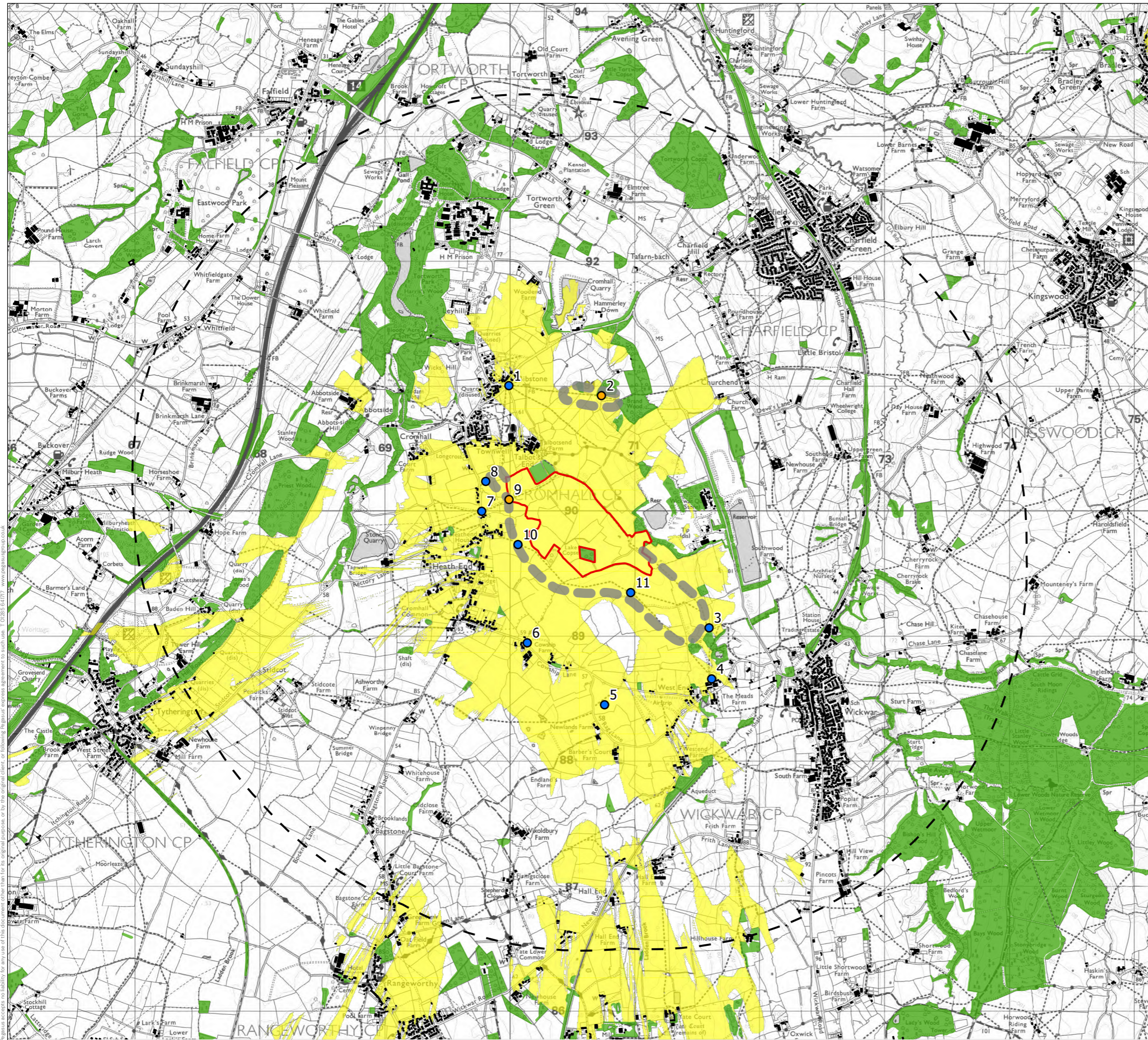




## **Figure 4: Screened Zone of Theoretical Visibility and Viewpoint Locations Plan**



- KEY**
- Site Boundary
  - 3km Buffer
  - OS Local Woodland
  - OS Local Buildings
  - Zone of Theoretical Visibility - 3.5m Development Height
  - Zone of Visual Influence
  - Photomontage Location
  - Viewpoint Location

Screened ZTV Production Information -  
 - DTM data used in calculations is OS Terrain 5 that has been combined with OS Open Map Local data for woodland and buildings to create a Digital Surface Model (DSM).  
 - Indicative woodland and building heights are modelled at 15m and 8m respectively.  
 - Viewer height set at 1.7m (in accordance with para 6.11 of GLVIA Third Edition)  
 - Calculations include earth curvature and light refraction

N.B. This Zone of Theoretical Visibility (ZTV) image illustrates the theoretical extent of where the development may be visible from, assuming 100% atmospheric visibility, and includes the screening effect from vegetation and buildings, based on the assumptions stated above.

NOTES:  
 REVISIONS:

**SCREENED ZONE OF THEORETICAL VISIBILITY**  
**Varley Solar Farm**

DATE	DRAWN	APPROVED	SCALE
31/10/2022	CR	DT	1:30,000@A3
SHEET	REVISION	DRAWING NUMBER	
-	A	P22-0915_EN_01	
N	0	1 km	



Copyright Pegasus Planning Group Ltd. © Crown copyright and database rights 2022. Ordnance Survey 010003873. Emaprise Licence number 010003873. Pomap Licence number 010020448. All rights reserved. No liability for any use of this document, or the data contained therein, in any form or by any means, without the prior written consent of Pegasus Planning Group Ltd.