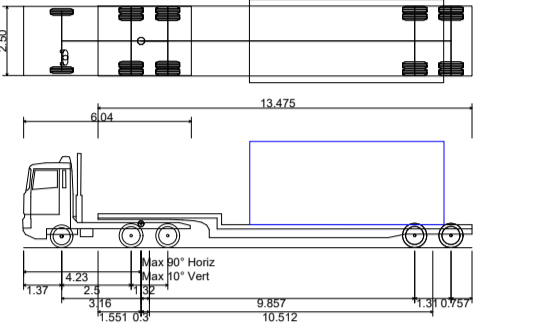


- KEY:**
- DEVELOPMENT BOUNDARY
(OUTSIDE EDGE OF LINE DENOTES BOUNDARY)
 - NEW ACCESS TRACK
 - EXISTING ACCESS TRACK
 - VEHICLE BODY/EXTENTS
 - VEHICLE WHEEL EXTENTS
 - LOAD EXTENTS

ANALYSIS CARRIED OUT FOR:



Low Loader (3.5m x 8m Kiosk)
 Overall Length 16.154m
 Overall Width 3.300m
 Overall Body Height 3.830m
 Min Body Ground Clearance 0.318m
 Max Vehicle Width 2.500m
 Lock to lock time 6.00s
 Kerb to Kerb Turning Radius 6.890m

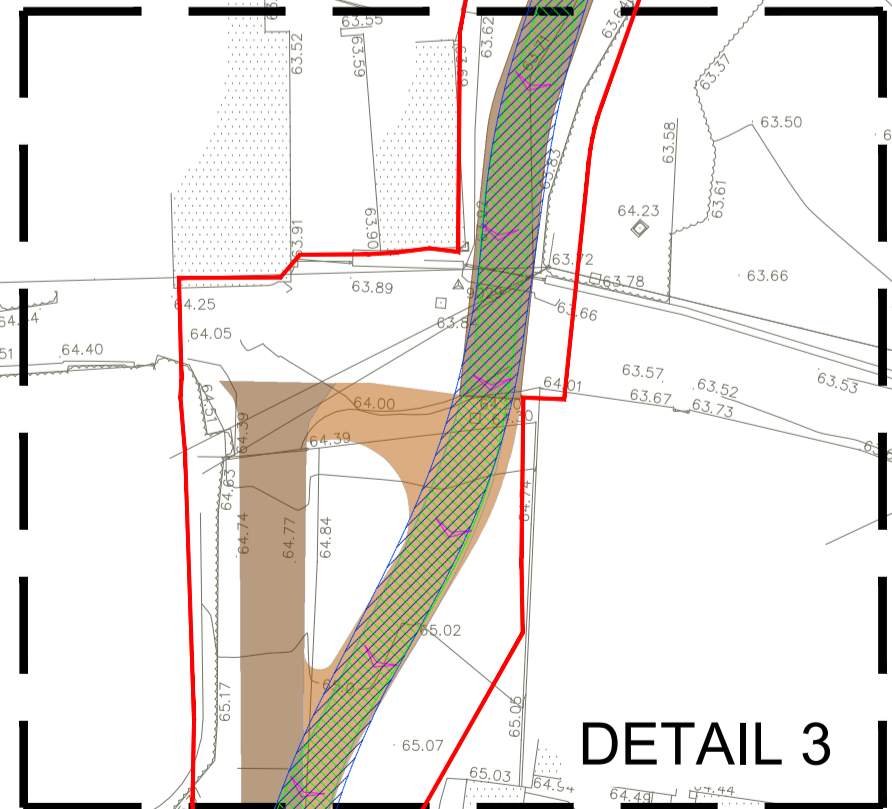
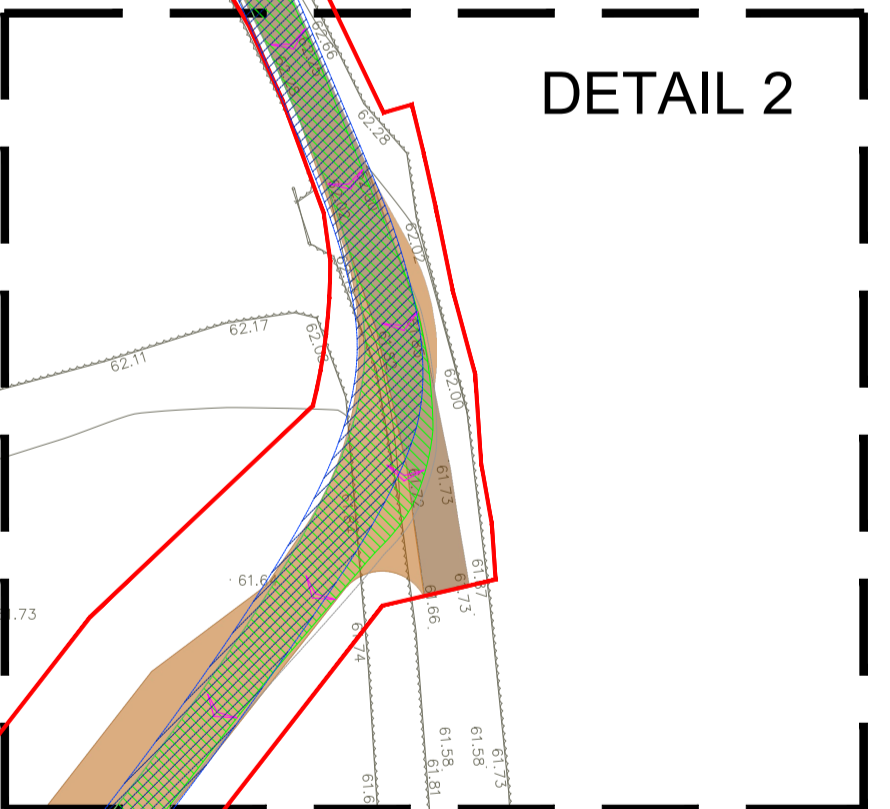
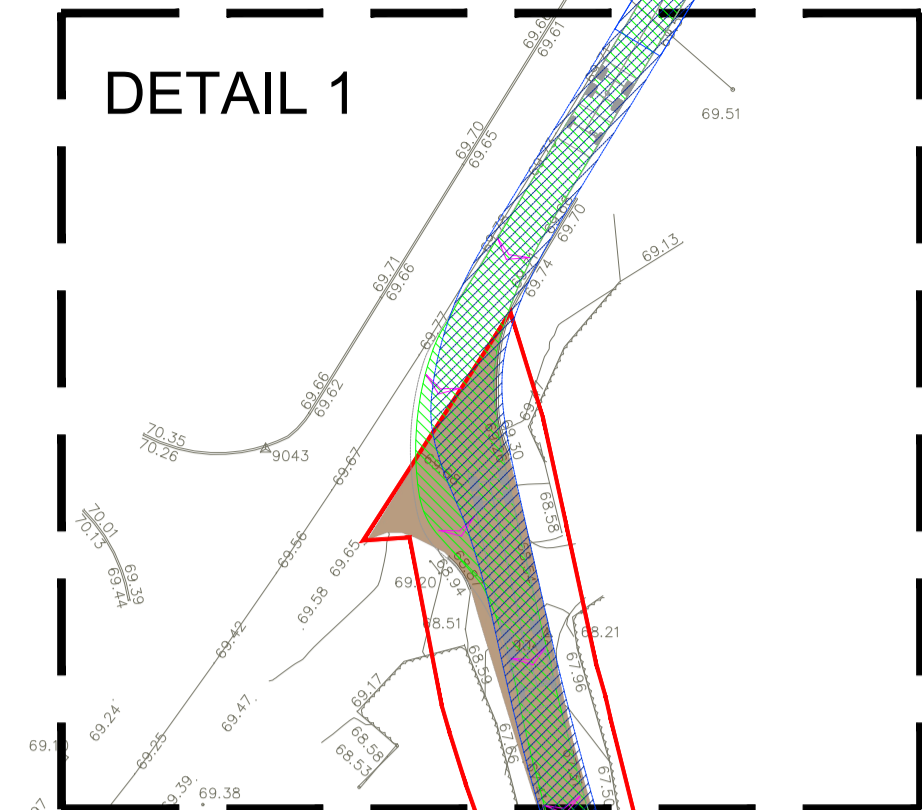


SITE LOCATION - NOT TO SCALE

**OVERVIEW
SHEET 1 OF 2**



2	FG	VM	BD	2023-04-19	Minor amend
1	FG	VM	BD	2023-04-19	First Issue
ISSUE	DRAWN	CHKD	APPD	DATE	REVISION NOTES
PURPOSE				PERMITTING	OSGB 1936
SCALE				1:500	@ A1
LAYOUT DWG				N/A	T-LAYOUT NO. N/A
PROJECT TITLE					
VARLEY FARM					
DRAWING TITLE					
FIGURE 16 SWEPT PATH ANALYSIS ABNORMAL LOAD					
RES DRAWING NUMBER					REV
04886-RES-ACC-DR-PT-003					2

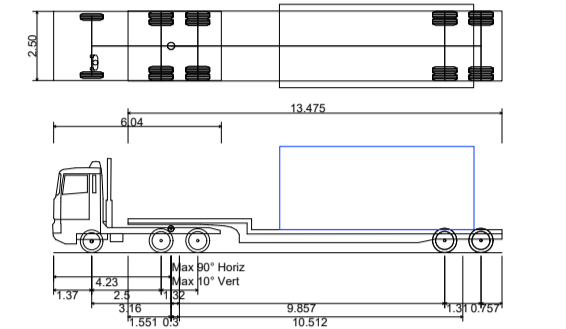


ARTICULATE VEHICLETM
TRAVELING FROM B4058 TO
SOLAR FARM SITE

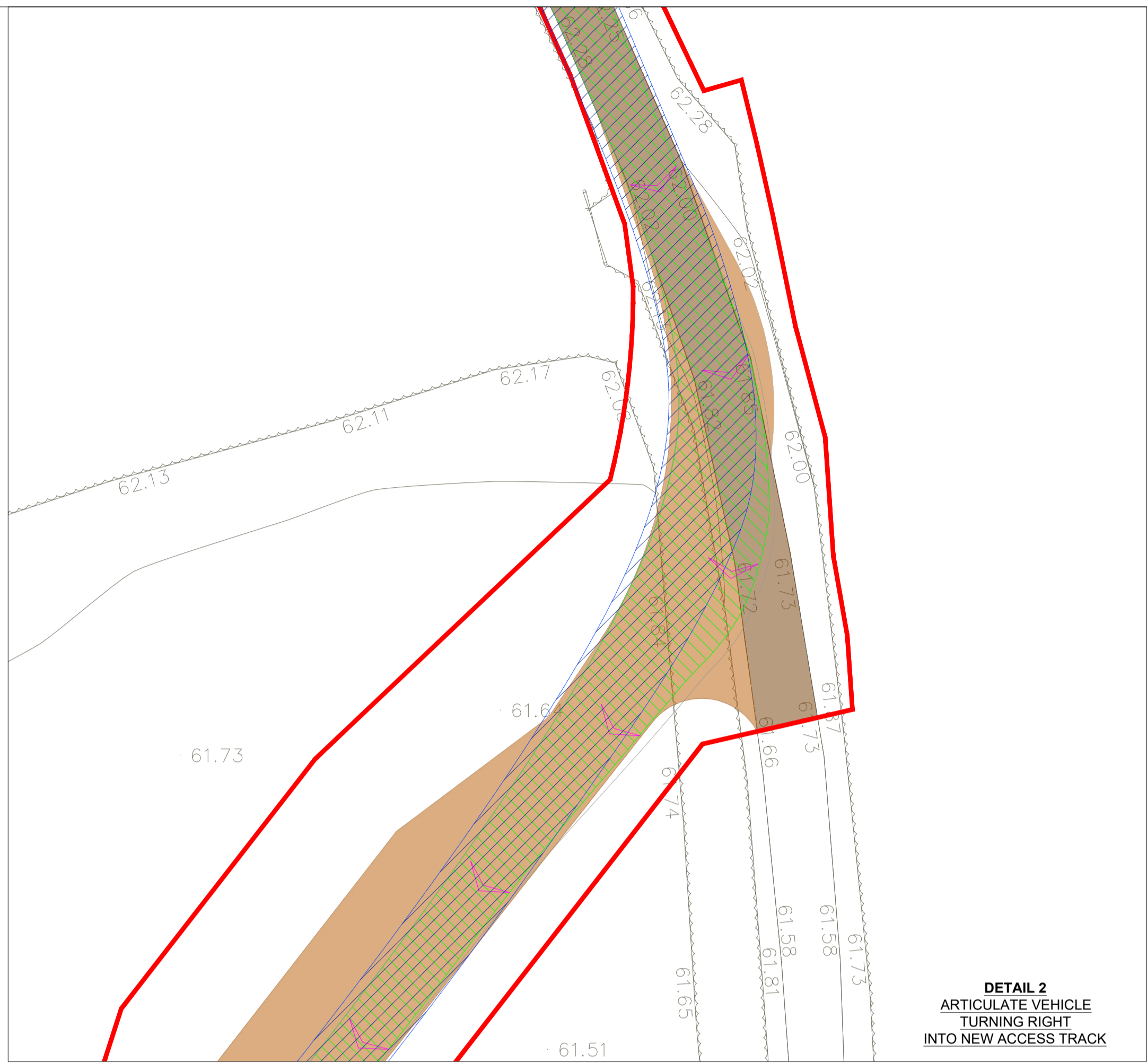
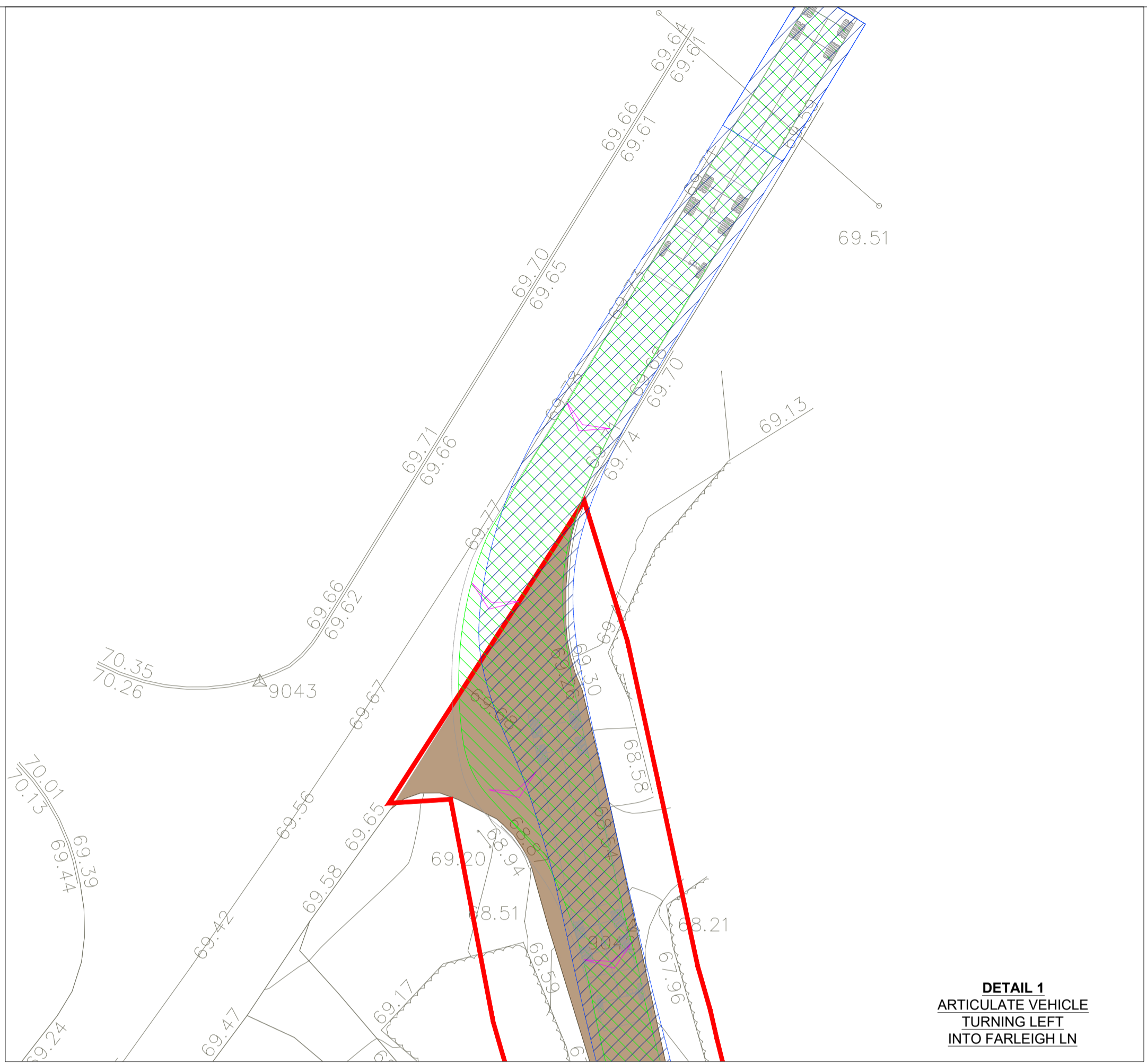
KEY:

- DEVELOPMENT BOUNDARY
(OUTSIDE EDGE OF LINE DENOTES BOUNDARY)
- NEW ACCESS TRACK
- EXISTING ACCESS TRACK
- VEHICLE BODY/EXTENTS
- VEHICLE WHEEL EXTENTS
- LOAD EXTENTS

ANALYSIS CARRIED OUT FOR:



Low Loader (3.5m x 8m Kiosk)	16.154m
Overall Length	3.500m
Overall Width	3.830m
Min Body Ground Clearance	0.318m
Max Vehicle Width	2.500m
Lock to lock turn	6.000m
Kerb to Kerb Turning Radius	6.890m



SHEET 2 OF 2



2	FG	VM	BD	2023-04-19	Minor amend
1	FG	VM	BD	2023-04-19	First Issue
ISSUE	DRAWN	CHKD	APPD	DATE	REVISION NOTES
PURPOSE					COORDINATES
PERMITTING					OSGB 1936
SCALE				DATUM	N/A
1:200 @ A1					
LAYOUT DWG				T-LAYOUT NO.	N/A
N/A					

PROJECT TITLE
VARLEY FARM

DRAWING TITLE
**FIGURE 16
SWEEP PATH ANALYSIS
ABNORMAL LOAD**

RES DRAWING NUMBER
04886-RES-ACC-DR-PT-003

REV
2

THIS DRAWING IS THE PROPERTY OF RENEWABLE ENERGY SYSTEMS LIMITED AND NO REPRODUCTION MAY BE MADE IN WHOLE OR IN PART WITHOUT PERMISSION

BEAUFORT COURT,
EGG FARM LANE,
KINGS LANGLEY,
HERTS WD4 8LR, UK
TEL: +44 (0) 1923 290200
WWW.RES-GROUP.COM